

INKJET PRINTER

K2-16S & K2-18S

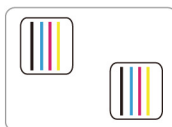
Eco Solvent Printer (2* i3200-E1)



Eco Solvent Ink



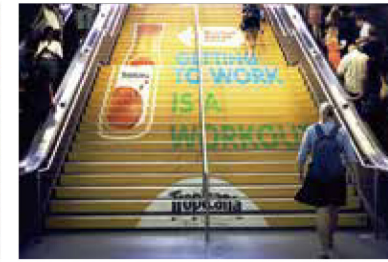
Two i3200-E1 Heads



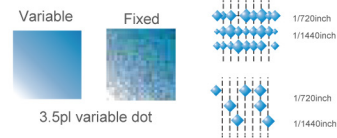
* 1.6m/1.8m Dual i3200-E1 Print Heads Speed

720x1200dpi - 4pass	40 m ² /h
720x1800dpi - 6pass	27 m ² /h

Our range of wide format inkjet printers matches our knack for engineering and quality with your desire for impeccable performance and careless production. You can produce roll-to-roll indoor prints and long term outdoor signs. Wide applications in light box posters, customized car stickers, background wall cloth, label printing, advertising sign, subway advertising, shopping mall advertising signs etc.



Intelligent inkjet printing technology and variable dot ensure the perfect printing output, greatly improve the printing speed, and meet the user's requirements for printing quality and speed.



High speed micro piezoelectric inkjet printing technology is equipped with i3200 print heads. It adopts advanced board control technology and industrial level design to ensure the durability of the print head.



• Technical Specifications

Model	K2-16S	K2-18S	
Print Head	Dual i3200-E1 Print Heads		
Printing Technology	Piezoelectric Inkjet		
Acceptable Media	Width	63.8 in.(1620 mm)	
	Thickness	Maximum 59 mil(1.5 mm)	
	Weight	132.2 lb.(60 kg)	
Printing Width	63 in.(1600 mm)	70.8 in.(1800 mm)	
Ink Cartridges	Type	Eco Solvent Ink	
	Capacity	4* CISS (220ml ink cartridge with 1.5L ink tank)	
	Color	CMYK	
Printing Resolution	Maximum 2400 dpi		
Printing Speed	4pass(720x1200dpi): 40 m ² /h		
	6pass(720x1800dpi): 27 m ² /h		
Media Heating System	Platform drying		
Interface	LAN		
Power Supply	AC 220V ± 10%, 50/60 HZ		
Dimensions(with stand)	108(W)x31(D)x63(H) in.	118(W)x39(D)x70(H) in.	
	2750(W)x800(D)x1500(H) mm	3000(W)x1000(D)x1800(H) mm	
Weight(with stand)	661 lb.(300 kg)	705 lb.(320 kg)	
	110(W)x30(D)x30(H) in.	132(W)x30(D)x41(H) in.	
Package Dimensions	2800(W)x760(D)x760(H) mm	3360(W)x760(D)x1040(H) mm	
Package Weight	GW 250 Kgs NW 200 Kgs	GW 290 Kgs NW 240 Kgs	
Environment	Power on	Temperature: 59 F to 90 F [15 C to 32 C] / Humidity: 35 to 80% (no condensation)	
	Power off	Temperature: 41 F to 104 F [5 C to 40 C] / Humidity: 20 to 80% (no condensation)	
Accessories	Dual i3200 Print Heads, USB cable, media clamp, manual, drain bottle, ink cartridges, RIP software, etc.		



THK high-precision mute rail.



Multi-stage pinch roller structure brings more stable feeding precision.



High-precision and high-stability tensioning pulley system.



High quality DC servo motor with good stability and long life.



Stable bulk system ensures amazing printing speed.



Front, middle and rear three-stage heating device to accelerate drying and improve output quality.



The automatic moisturizing and cleaning system not only protects the print head, but also ensures the smoothness of the ink-flow.



External power supply, intelligent rolling system.