

INKJET PRINTER SUBLIMATION

K2-16TX

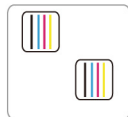
Sublimation Printer (2* i3200-A1)



Sublimation Ink



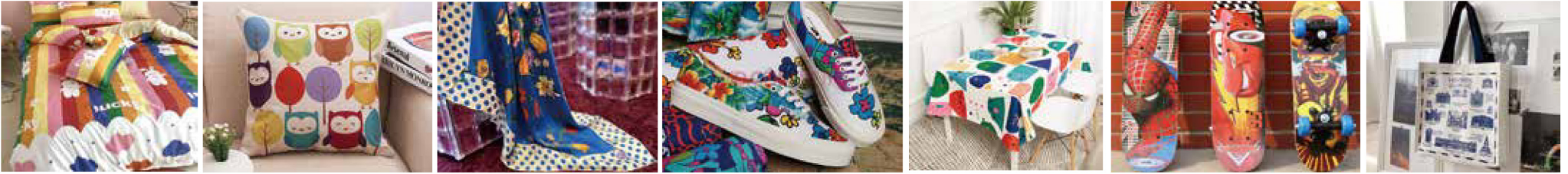
Dual i3200-A1 Heads



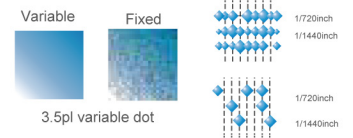
*1.6m/1.8m Dual i3200-A1 Print Heads Speed

| | |
|---------------------|----------------------|
| 720x1200dpi - 4pass | 40 m ² /h |
| 720x1800dpi - 6pass | 27 m ² /h |

Both the sublimation and direct-to-textile printers are examples of our expertise and engineering: top performant, reliable and precise. With KEDITEC series printer, you can maximize production while controlling quality and minimizing costs for beautiful soft signage, apparel and interior decor items that will set your business apart from the competition. Wide applications in clothing, home decoration fabrics, sampling, shirt, canvas bags, bolster, scooter, flags, textile gadgets etc.



Intelligent inkjet printing technology and variable dot ensure the perfect printing output, greatly improve the printing speed, and meet the user's requirements for printing quality and speed.



High speed micro piezoelectric inkjet printing technology is equipped with i3200 print heads. It adopts advanced board control technology and industrial level design to ensure the durability of the print head.



● Technical Specifications

| Model | K2-16TX | K2-18TX |
|------------------------|--|--|
| Print Head | Dual i3200-A1 Print Heads | |
| Printing Technology | Piezoelectric Inkjet | |
| Acceptable Media | Width | 63.8 in.(1620 mm) 71.6 in.(1820 mm) |
| | Thickness | Maximum 39 mil (1mm) |
| | Weight | 132.2 lb.(60 kg) |
| Printing Width | 63 in.(1600 mm) | 70.8 in.(1800 mm) |
| Ink Cartridges | Type | Sublimation Ink |
| | Capacity | 4*4 CISS (220ml ink cartridge with 1.5L ink tank) |
| | Color | CMYK |
| Printing Resolution | Maximum 3600 dpi | |
| Printing Speed | 4pass(720x1200dpi): 40 m ² /h | |
| | 6pass(720x1800dpi): 27 m ² /h | |
| Media Heating System | Intergrated post heater & Infrared Dryer & Fan system | |
| Interface | LAN | |
| Power Supply | AC 220V ± 10%, 50/60 HZ | |
| Dimensions(with stand) | 108(W)x31(D)x63(H) in. | 118(W)x39(D)x70(H) in. |
| | 2750(W)x800(D)x1500(H) mm | 3000(W)x1000(D)x1800(H) mm |
| Weight(with stand) | 661 lb.(300 kg) | 705 lb. (320 kg) |
| Package Dimensions | 110(W)x30(D)x30(H) in. | 132(W)x30(D)x41(H) in. |
| | 2800(W)x760(D)x760(H) mm | 3360(W)x760(D)x1040(H) mm |
| Package Weight | GW 250 Kgs NW 200 Kgs | 1212 lb. (550 kg) |
| Environment | Power on | Temperature: 59 F to 90 F [15 C to 32 C] / Humidity: 35 to 80% (no condensation) |
| | Power off | Temperature: 41 F to 104 F [5 C to 40 C] / Humidity: 20 to 80% (no condensation) |
| Accessories | Dual i3200 Print Heads, USB cable, media clamp, manual, drain bottle, ink cartridges, RIP software, etc. | |



THK high-precision mute rail.



New pinch roller structure of three in group brings more stable feeding precision.



High-precision and high-stability tensioning pulley system.



High quality DC servo motor with good stability and long life.



Stable bulk system ensures amazing printing speed.



Infrared heater and cooling fan.



Automatic moisturizing cleaning assembly ensures the stability of head cleaning and improves working stability.



External power supply, intelligent rolling system.